

# biofree<sup>®</sup>

**WHO**   
**Formulation**  
**EN1500 Standard**

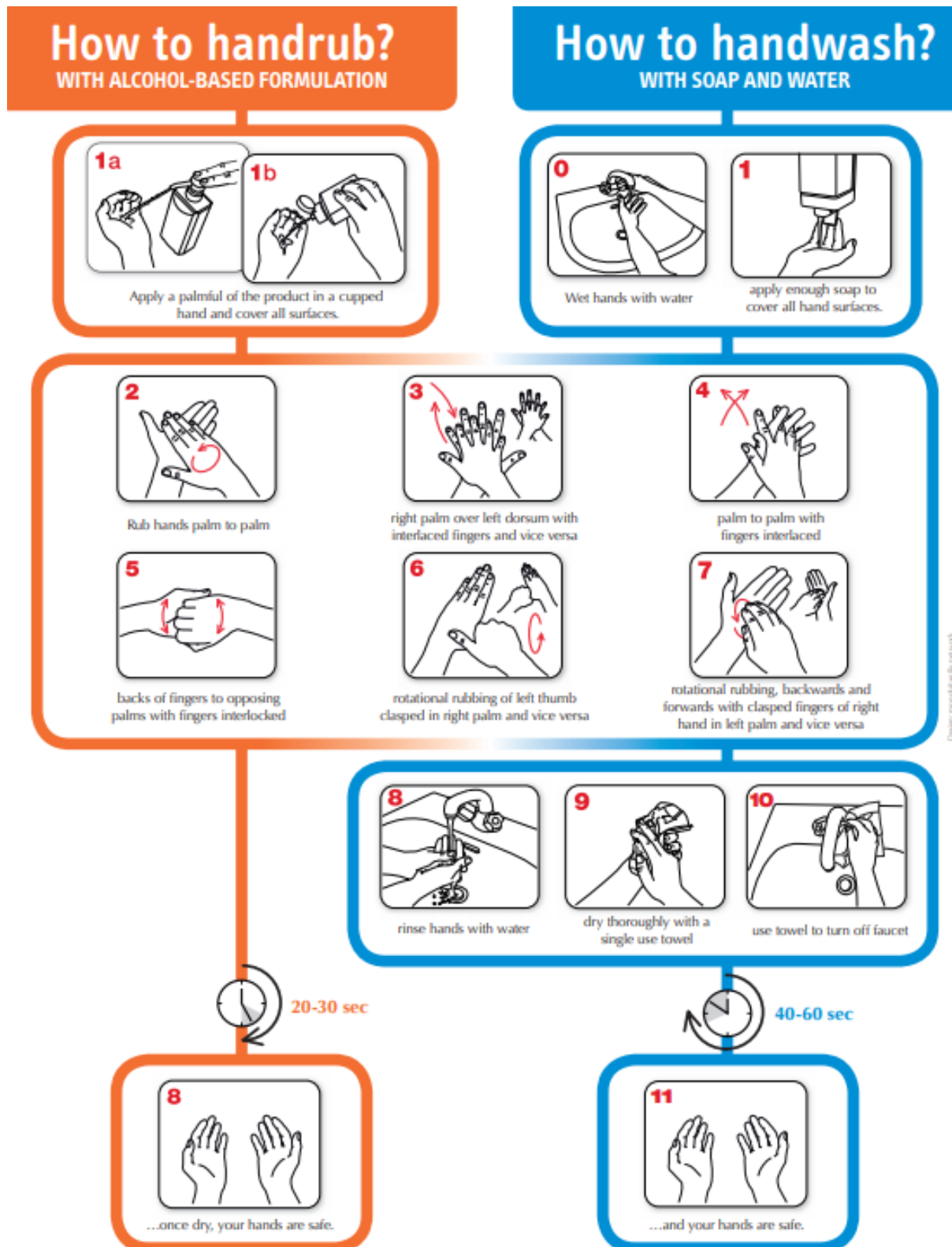


# Contents

1. Using your BioFree® Product.....	3
2. Refilling Your BioFree® Product.....	4
1.1 Refilling your dispenser .....	4
1.2 Using a Measuring Jug.....	5
1.3 Using a Bottle .....	5
1.4 Using larger BioFree® Products.....	7
3. Safety Information .....	8

# 1. Using your BioFree® Product

This handy diagram shows you how to use your hand rub compared to regular hand washing.



## 2. Refilling Your BioFree® Product

Some of our products are refillable. We have produced this guide to show you how to do this with ease.

### 1.1 Refilling your dispenser

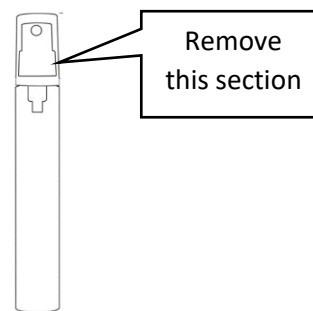
#### Step One

Fill a measuring jug with a small amount of handrub liquid.



#### Step Two (a. Spray Bottle)

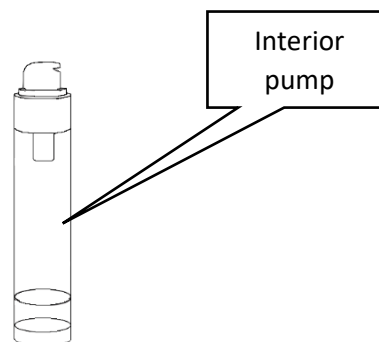
Undo the top of your



#### Step Two (b. Airless Dispenser)

The interior pumps in our airless dispensers need to be repositioned after their first use by pushing down on pump (See pictures). You can do this using a cocktail sticks, pens or pencils.

Airless dispensers can be **identified** using the interior pump (See pictures).

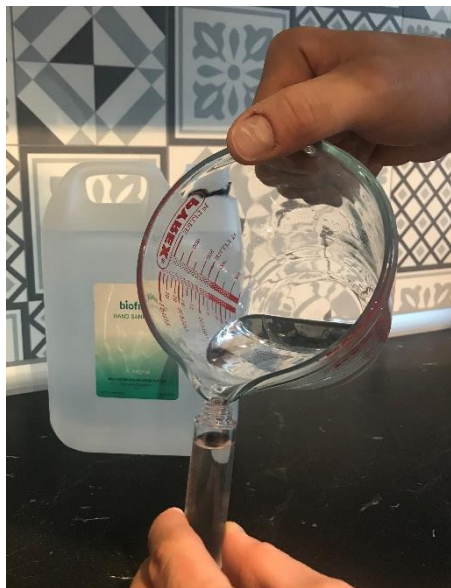


## 1.2 Using a Measuring Jug

Follow 1.1 then proceed as follows:

### Step One

Carefully pour your hand rub liquid into the dispenser.



## 1.3 Using a Bottle

If you do not have a measuring jug, or you find it difficult to use, we can advise using an ordinary water bottle.

Follow 1.1 then proceed as follows:

### Step One

Take an empty water bottle or thoroughly rinsed soft drinks bottle and pierce a hole in the lid (this can be done using a kitchen knife, scissors or a drill (if you're really into DIY!))



### Step Two

Fill your water bottle with a small amount of hand rub liquid and replace the lid.

### Step Three

Carefully pour your hand rub liquid into the dispenser.



## 1.4 Using larger BioFree® Products

Follow 1.1 then proceed as follows:

### Step One

Our 1L bottles come with small cap sizes to allow for easy dispensing of the hand rub liquid. Open the cap and pour slowly into your smaller unit.



# 3. Safety Information

Our safety data sheet, which includes first aid measures and who to call in an emergency can be found at the bottom of our website pages. Simply click on the link and download or view the PDF.

